

ZNRF2 Antibody
Rabbit mAb
Catalog # AP91009**Specification****ZNRF2 Antibody - Product Information**

Application	WB, IHC
Primary Accession	Q8NHG8
Reactivity	Rat
Clonality	Monoclonal
Other Names	
E3 ubiquitin-protein ligase ZNRF2; ZNRF2; Zinc/RING finger protein 2; RNF202; Protein Ells2;	
Isotype	Rabbit IgG
Host	Rabbit
Calculated MW	24115 Da

ZNRF2 Antibody - Additional Information

Dilution	WB~~1:1000 IHC~~1:100~500
Purification	Affinity-chromatography
Immunogen	A synthesized peptide derived from human ZNRF2
Description	May play a role in the establishment and maintenance of neuronal transmission and plasticity via its ubiquitin ligase activity. E3 ubiquitin ligases accept ubiquitin from an E2 ubiquitin-conjugating enzyme in the form of a thioester and then directly transfer the ubiquitin to targeted substrates.
Storage Condition and Buffer	Rabbit IgG in phosphate buffered saline , pH 7.4, 150mM NaCl, 0.02% sodium azide and 50% glycerol. Store at +4°C short term. Store at -20°C long term. Avoid freeze / thaw cycle.

ZNRF2 Antibody - Protein Information**Name** ZNRF2**Synonyms** RNF202**Function**

E3 ubiquitin-protein ligase that plays a role in the establishment and maintenance of neuronal transmission and plasticity. Ubiquitinates the Na(+)/K(+) ATPase alpha-1 subunit/ATP1A1 and thereby influences its endocytosis and/or degradation (PubMed:22797923). Acts also as

a positive regulator of mTORC1 activation by amino acids, which functions upstream of the V-ATPase and of Rag-GTPases (PubMed:27244671). In turn, phosphorylation by mTOR leads to its inhibition via targeting to the cytosol allowing a self-regulating feedback mechanism (PubMed:27244671).

Cellular Location

Endosome membrane; Peripheral membrane protein. Lysosome membrane; Peripheral membrane protein. Presynaptic cell membrane; Peripheral membrane protein. Cytoplasm

Tissue Location

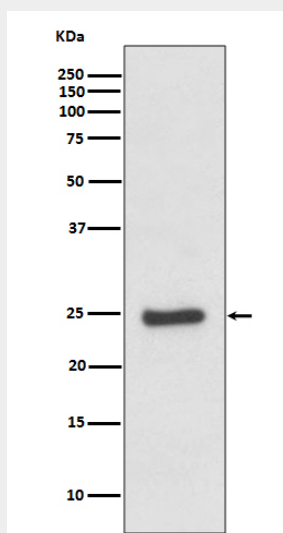
Highly expressed in the brain, with higher expression during development than in adult. Expressed also in mammary glands, testis, colon and kidney.

ZNRF2 Antibody - Protocols

Provided below are standard protocols that you may find useful for product applications.

- [Western Blot](#)
- [Blocking Peptides](#)
- [Dot Blot](#)
- [Immunohistochemistry](#)
- [Immunofluorescence](#)
- [Immunoprecipitation](#)
- [Flow Cytometry](#)
- [Cell Culture](#)

ZNRF2 Antibody - Images



Western blot analysis of ZNRF2 expression in HeLa cell lysate.